

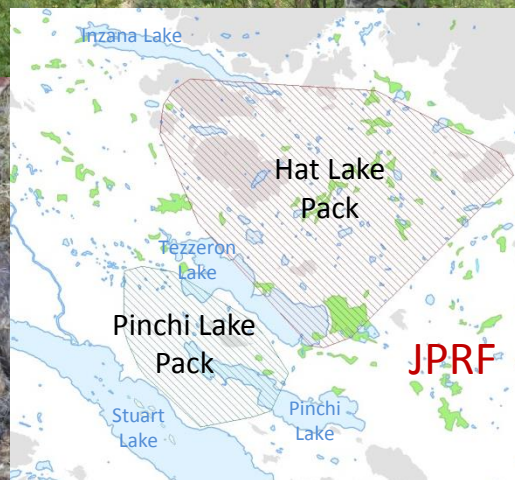
Wolf predation patterns in North Central B.C.

Fall 2018 Update

To better understand wolf predation risk to moose south of Prince George, Ministry of Forests, Lands, Natural Resource Operations and Rural Development biologists are tracking wolves in packs that overlap collared moose cows and calves as part of the provincial Moose Research Project.

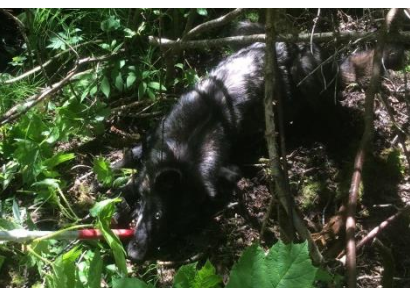
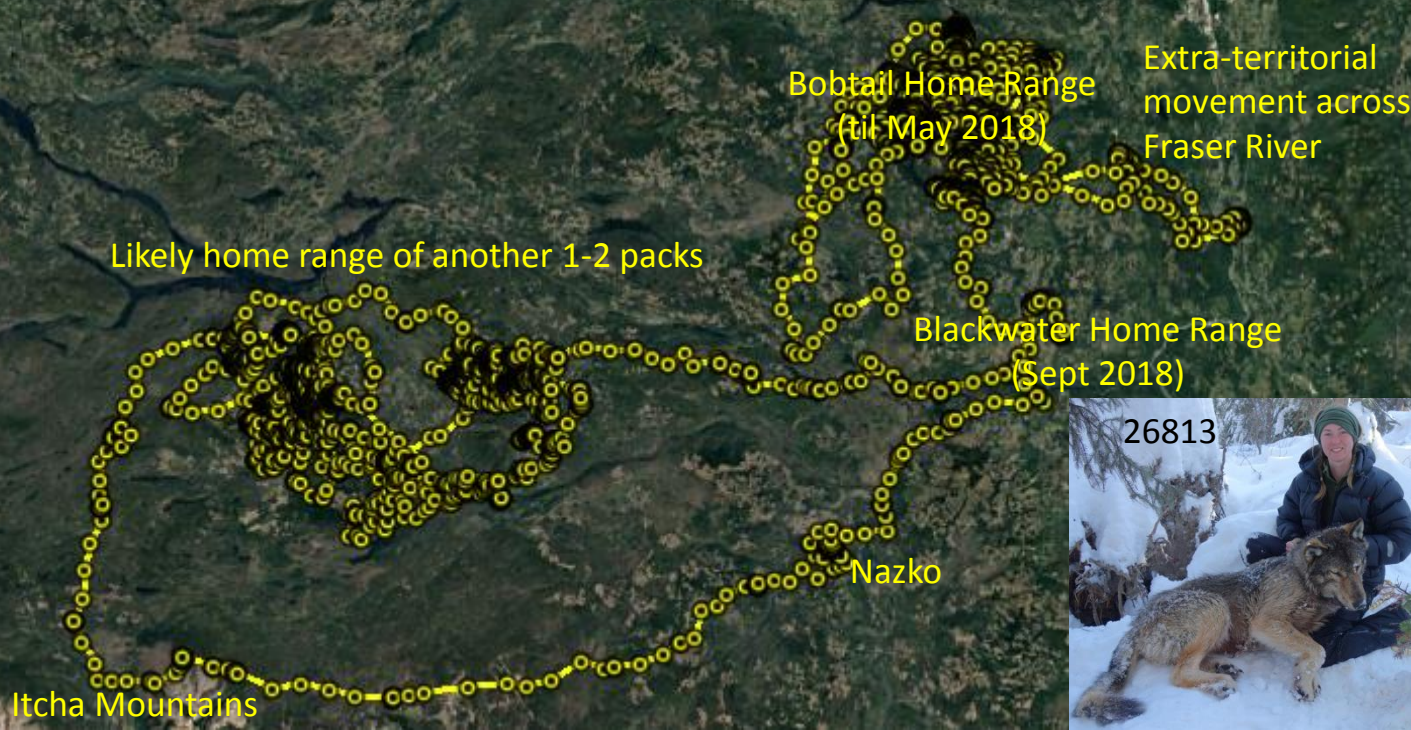
Kill site highlights:

- Visited 186 location clusters, found 37 kills and 4 scavenges (all moose except 1 black bear in PGS, 1 unknown, 1 elk at JPRF)
- Many clusters are along streams and wetlands where wolves are hunting beavers
- We were able to retrieve an offline moose collar when the Bobtail pack scavenged a bear-killed moose cow



Movements of 26813

At the end of May, the Bobtail wolf with collar 26813 took off south to Nazko, then headed west to the Itchas, and north to Entiako. He spent all summer there, and in late September wandered back east to the Punchaw area. He was a large aggressive male when we collared him, so we'd assumed we got the breeder. Apparently there's a more aggressive male in that pack though, and he left to try his luck elsewhere. We'll see where he ends up...



New Collars in JPRF

We trapped and collared two adult females in June, in a pack between Pinchi and Tezzeron lakes, and a pack between Tezzeron and Inzana lakes.



Next Steps...

Helicopter capture for another 2-3 packs in each study site starts in December, and kill site investigations will ramp up as we get more collars out too.

For more information 250-614-7400
 Morgan.Anderson@gov.bc.ca

